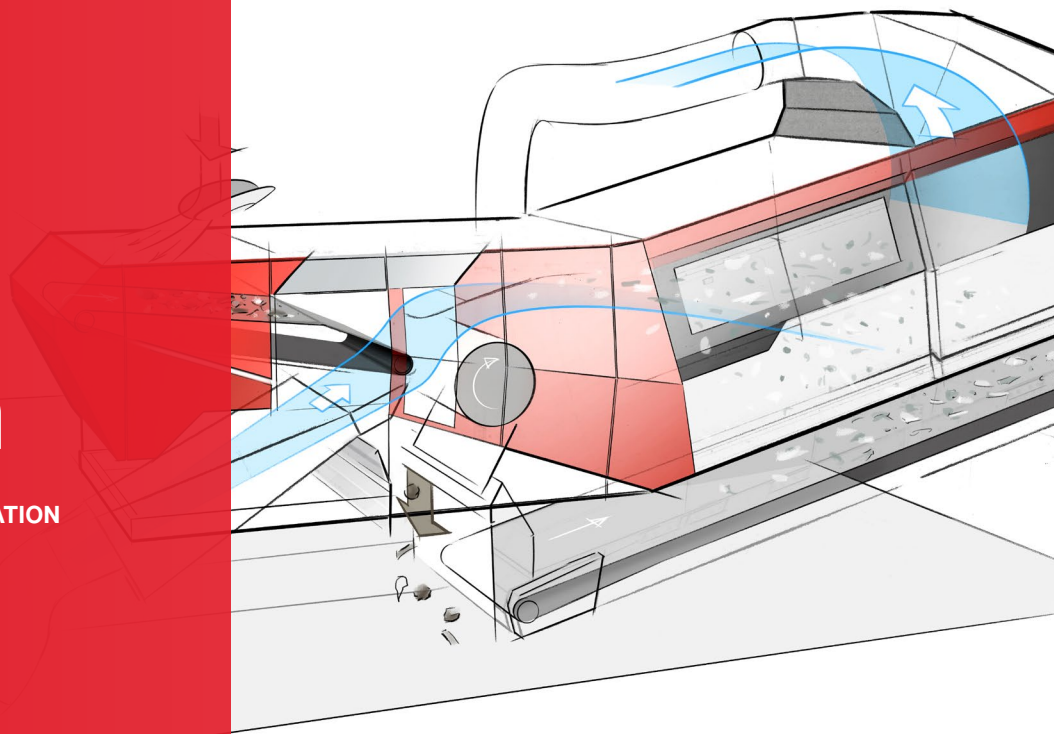
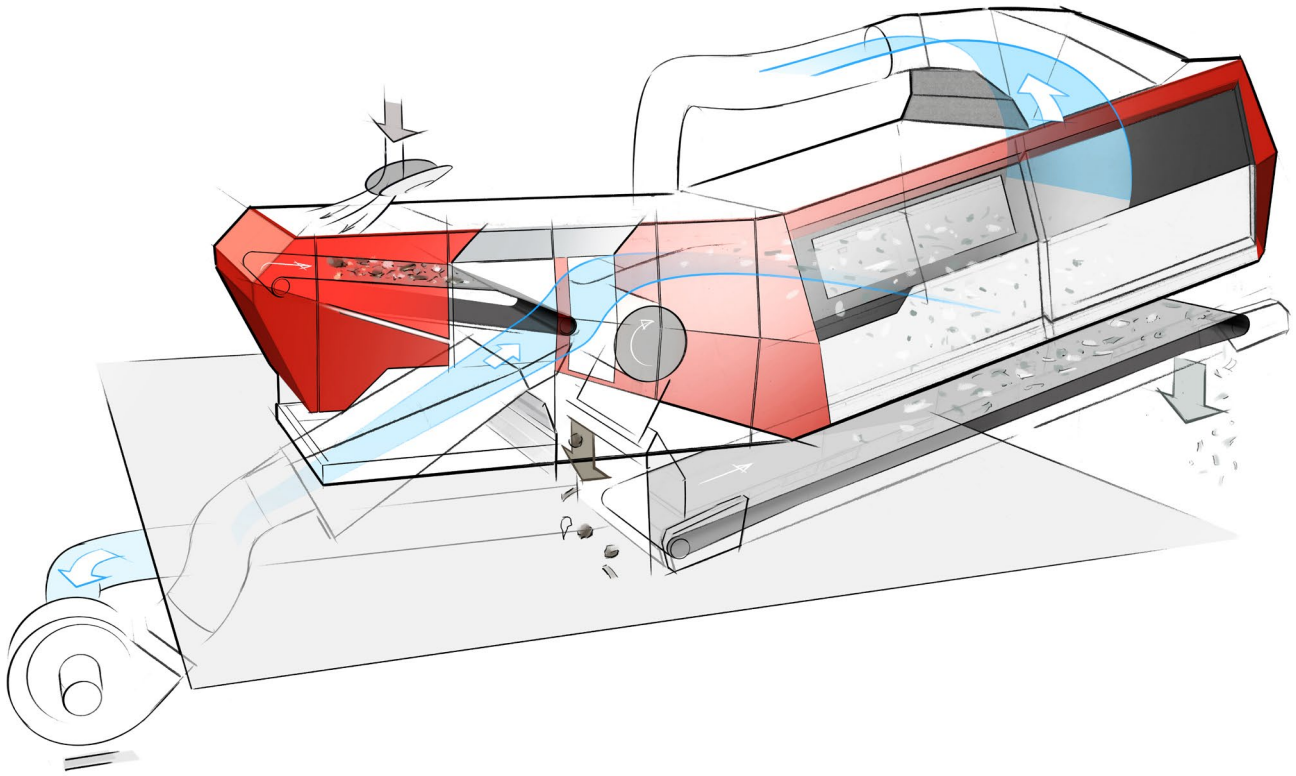


# AirStar® evolution

WINDSIFTING | PRODUCT PRESENTATION



# AirStar<sup>®</sup> evolution



## A new era of separation technology

The AirStar evolution sets new standards in terms of efficiency, precision and user-friendliness. It combines the latest innovations with Westeria's decades of expertise in the field of windsifting.

The pioneering NotusAir system is the first to combine high-precision airflow control with an air recirculation system that makes a large filter unit obsolete and only requires a compact filter. The entire design of the machine has been redeveloped from scratch and now allows even better access to all components. Large-area glazing also enables direct visual inspection. The entire system is still one of the most compact and robust windsifters on the market.

The new Westeria user interface enables tool-free adjustment of all parameters centrally from an intuitive touch display. This includes the positioning of the feed belt, the separation drum, the nozzle angle and the pressure control.

---

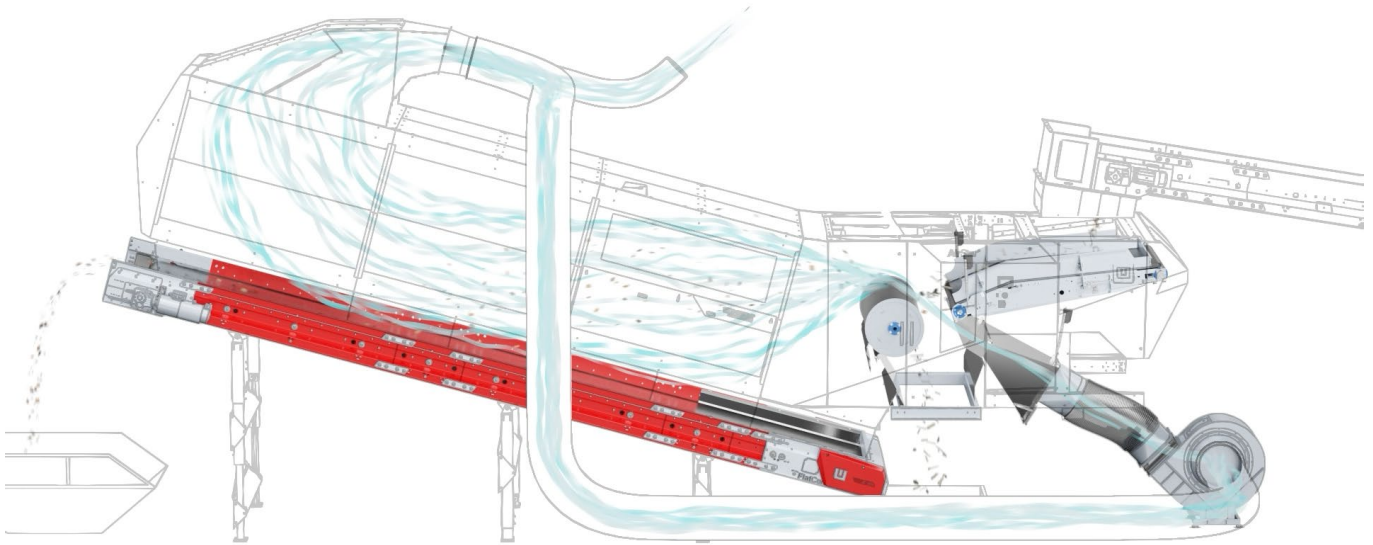
## About us

Westeria is a German company from Westphalia with over 60 years of experience producing innovative machinery. Since 1956, our product portfolio has largely grown to provide high-quality machines, technical expertise and excellent service to our clients. We are constantly developing new recycling machines and conveyor systems for what is perhaps the biggest challenge of the present day: make the circular economy a valuable and profitable reality all over the world.

# NotusAir

## The air system for perfect separation results

The introduction of the AirStar evolution marks a turning point in air separator technology, particularly with the innovative NotusAir air separation system. This system represents the pinnacle of precision engineering, developed to achieve unrivaled separation efficiency. NotusAir is characterized by its tailor-made components and intelligent design, which is based on precise control of the air flow to enable optimum separation results.



### Adjustable fan

The fan allows precise control of the air speed. The frequency control reduces energy consumption by over 30% compared to conventional air throttle valves and minimizes noise pollution at the same time.

### Extra wide nozzle

NotusAir's enlarged nozzle opening enables a wider and more even air flow, which contributes significantly to improving separation quality.

### Optimized air guidance system

Carefully coordinated components in the AirStar evolution ensure that the air flow is directed into the lightweight chamber. Safe air recirculation is possible with a specially designed exhaust hood.

### Central automatic parameter setting

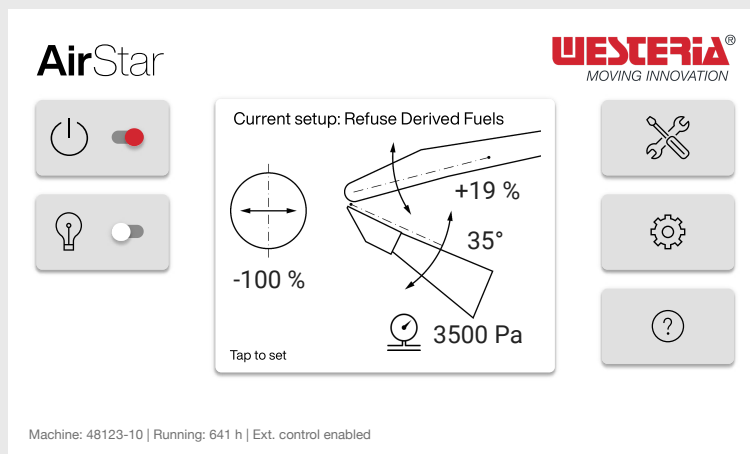
A combination of horizontally movable separating drum and vertically adjustable feed belt, supplemented by adjustment of the nozzle angle and pressure control, enables highly precise adjustment of the separation process without the use of tools.

# Intuitive control

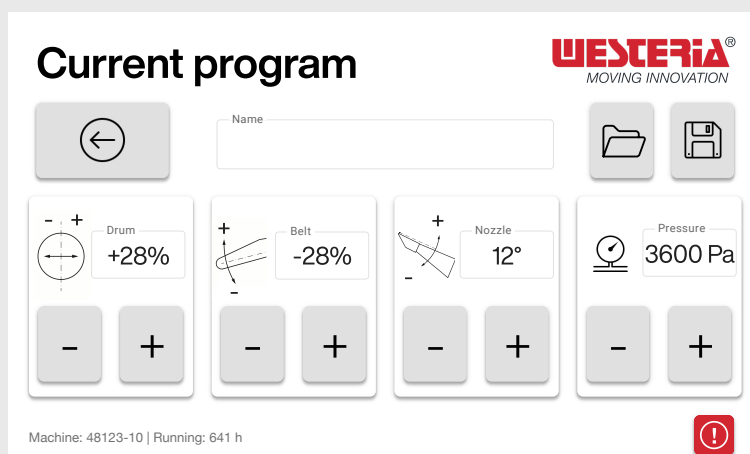
## Simple operation for everyone

With the AirStar evolution, we offer an intuitive control system as standard, which is specially designed to make the operation of the machine accessible and understandable for everyone worldwide. By using clear symbols and a simple user interface, we overcome language barriers and ensure that even users with little prior knowledge can use the machine effectively.

- Extremely simple operation enables quick training and safe operation
- Your individual material recipe is already programmed (tested in our TechCenter)
- Real-time parameter adjustment and recipe management optimize the separation process and increase productivity
- Easy integration into central system control



The main control window provides an immediate overview of the current status of the machine. The use of easily recognizable icons and a clear structure allows users to quickly access important functions and control the machine efficiently.

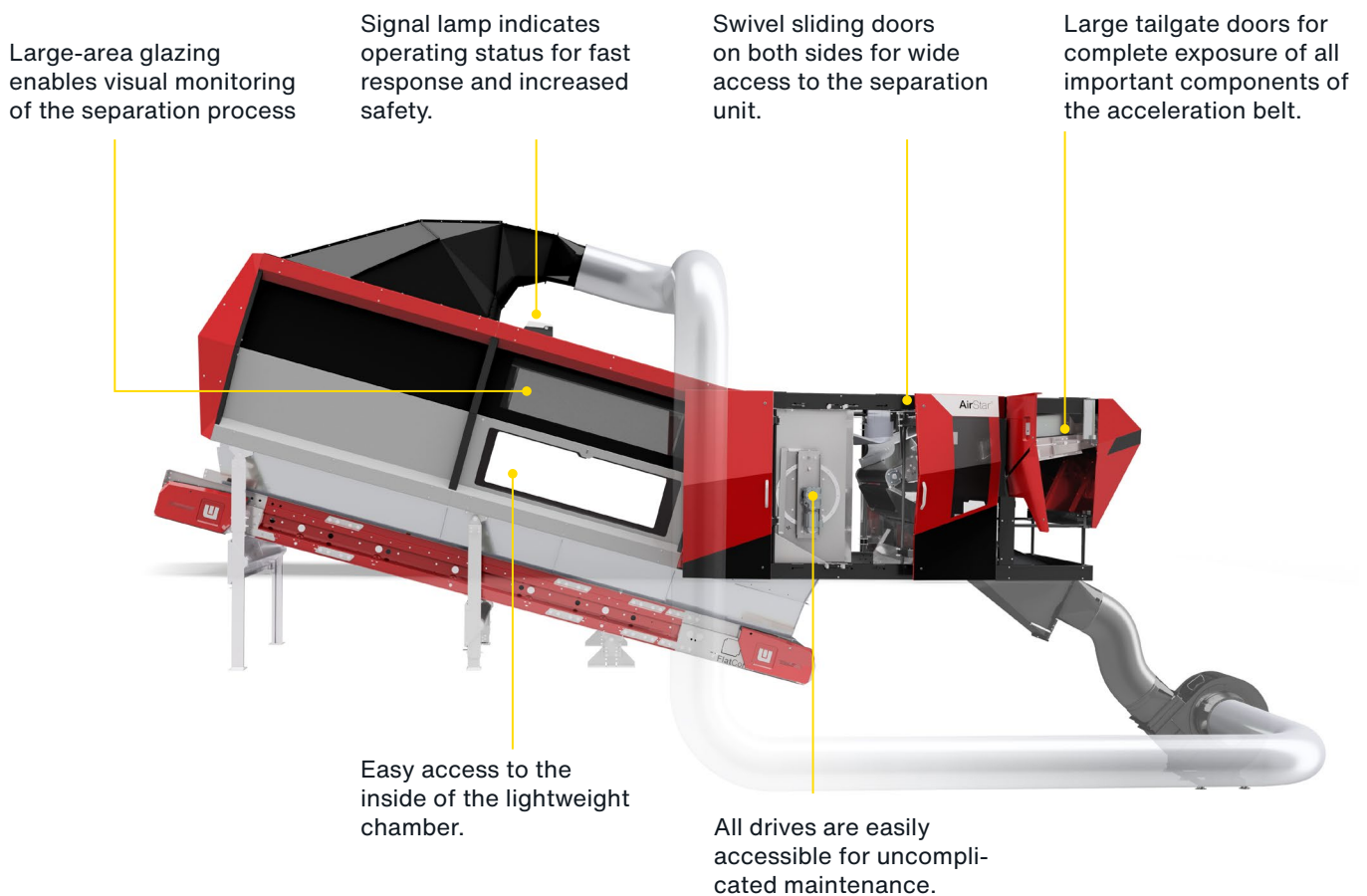


All parameter adjustments can be set centrally. In addition to the direct control options, access to the storage and retrieval of preset "recipes" is provided, allowing flexible adaptation to different materials and operating conditions. This functionality considerably simplifies operation and makes it easy to optimize separation results.

# Absolute ease of maintenance

## Optimum accessibility and reliability

Thanks to its sophisticated design, the AirStar evolution is easy to maintain from all sides. This simplifies maintenance and inspection work considerably.



### Next generation skew control

The patented misalignment control of the AirStar evolution precisely detects the position, running direction and misalignment speed of the belt. This enables even faster automatic intervention and correction, which prevents faults.

### Belt change without assembly

The extended accessibility allows the belt to be replaced without having to laboriously remove the accelerator belt unit. Avoid unnecessary downtime and expensive assembly work.

# Options

## Flexibility for every application

### DiscSpreader®

The tried-and-tested material distributor in an improved design ensures even belt coverage across the full belt width.

### DuoDrum

The use of a second drum and a second nozzle results in two high-precision separation processes. The additional fraction makes the areas of application even more diverse and can even replace ballistic separators.

### AirLift®

The overbelt extractor creates a third fraction by separating ultra-light material in the light material chamber.

### Installation option

The modular design of the wind sifter enables space-saving installation in any system.

- The adapted incline of the lightweight material chamber to 15° enables increased material transfer, while at the same time preventing material from slipping back on the conveyor belt.



#### Available working widths

- 1000 mm
- 1500 mm
- 2000 mm
- 3000 mm

#### Available lengths of the lightweight chamber

- L1 = 3000 mm
- L2 = 6000 mm
- L3 = 9000 mm

#### Extended FlatCon transfer belt

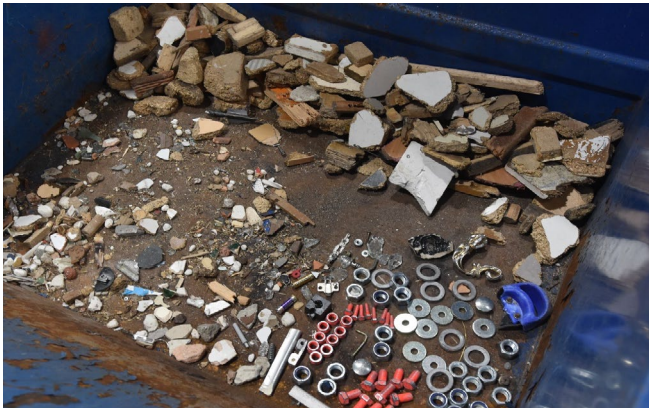
- 495 mm
- 990 mm
- 1980 mm
- 3960 mm



# Perfect windsifting

Arrange your material test in our TechCenter and benefit from guaranteed reproducible separation results.

## Waste wood



Heavy fraction



Light fraction

## Construction waste



Heavy fraction



Light fraction

## Compost



Heavy fraction



Light fraction



Westeria® GmbH

Raiffeisenstr. 2, 48346 Ostbevern, Germany  
Tel +49 2532 88-0 | [www.westeria.de](http://www.westeria.de)

01/2024