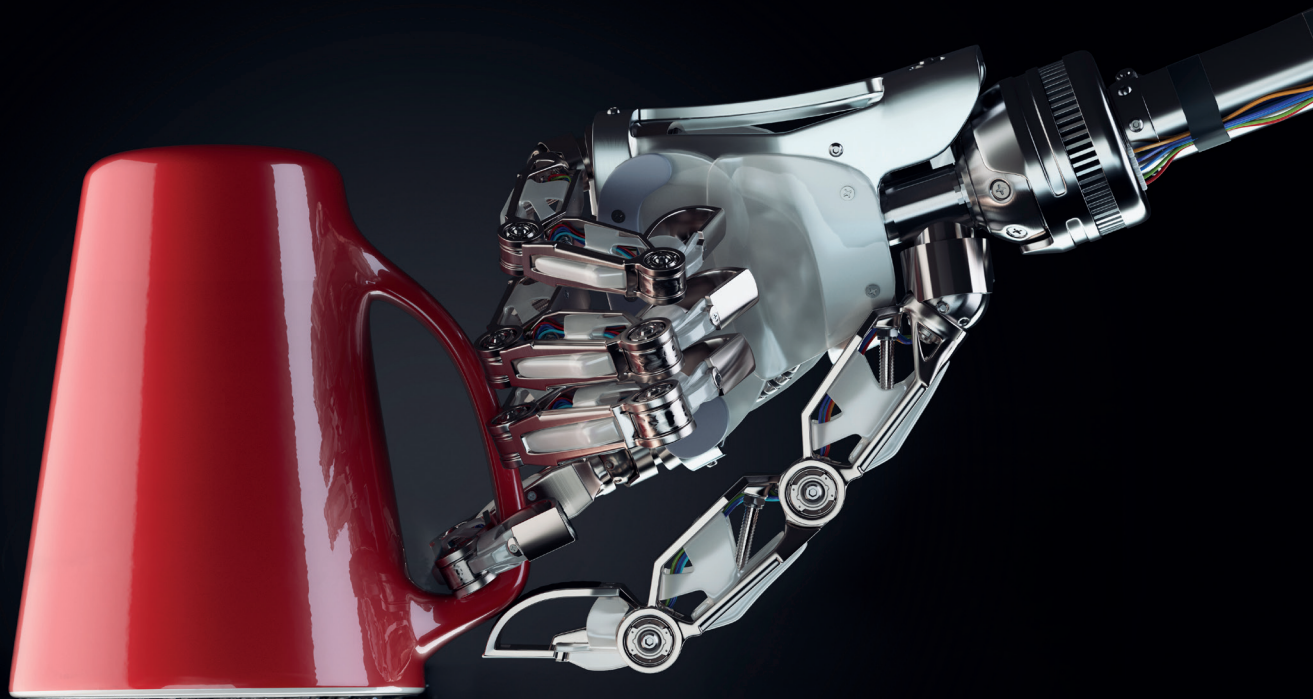


We understand bulk!

More time for important things

We empty automatically



Industry:

Food
Paints Industry
Chemistry



Process:

Automatically
Emptying of big bags



Key data:

- 3.5 min/ emptying cycle
- 4-loop big bags
- div. Big bag sizes



big bag compactor



special crossbar with load hook

Automatically emptying of Big Bags

For many years the big bag is one of the most used transport containers for the different types of bulks. The filling and emptying as well as the dust-free disposal of the emptied big bags is one of the main-competences of the Emde Automation GmbH.

At the beginning of the Emptying the big bag is posted through a lock system into the hanging position. The 4 loops of the big bag are hung in into the special crossbar by the operator. After the hanging-in process, the automatic modus is started and the big bag is lifted into the emptying position by an electric-chain hoist. By putting it on an emptying station the big bag floor is almost cut fiber free. An intermediate container picks up the complete big bag content. The product is promoted into the production process via a feeding – system.

In the next step, the empty big bag is transported to the drop position of the big bag compressor and is automatically released from the crossbar. This is made via the opening (swinging) of the load hooks. The empty big bag falls into the big bag compactor is detected by the digressively and conically formed compressor screw and compressed into a press bag (big bag). By evaluating the emptying cycles are shown to the operator a necessary change of the press bag. The electric chain hoist with traverse then moves back into the suspension position and the process starts again.

Due to the optimized sequence steps, the total process time takes only 3.5 minutes. The electric chain hoist is connected to the respective functional positions by means of a path coding system. A very high-performance filter system ensures dust removal of the system. At the crucial emission sources, the dust is extracted safely and efficiently. Due to the system layout, almost dust-free handling can be ensured.

Product features

- Automatic emptying and disposal of the big bags
- High emptying rate
- Process integration in control system
- Controlling of the process steps
- High cycle time
- Dealing with difficult and toxic goods
- No complex containment solutions necessary
- Feed orifice at every inventory unit possible
- Total unit-planning from one hand

Drive Times of the Electric chain-hoist:

- Lifting speed
2,50 / 10,00 m/min
- Trolley traversing speed
5,0 / 20,0 m/min

EMDE Group

We offer you an extensive program for mechanical conveying of bulk materials. All components are designed by our experienced sales staff in terms of process engineering and are offered specially tailored to the application. The coordination of the components and processes connected in series is an important prerequisite for the function of the overall system.

We offer you this complete solution from one source!

The quality of the conveyor systems and the reliability of the overall system is ensured by the in-house production of all components.

EMDE Automation GmbH
Koppelheck | 56377 Nassau

Tel.: +49 (0) 26 04 - 97 03 - 0

info@emde.de | www.emde.de